



BAHRIA TOWN  
KARACHI

# BAHRIA greens KARACHI

## LOW COST SCHEME



75 Sq Yds (15'x40')

Limited Residential Plots

Build Your Own Dream Home

Ground Plus 2 Floors,  
4 Bed, covered area approx.  
1700 Sq ft

### PAKISTANI RESIDENT

Installment Details	4 Years Payment Plan (Quarterly Installments)
Plot Size	75 Sq. Yards (15' x 40')
Processing Fee (Non-refundable and not part of the total amount)	RS. 5,000/-
Down Payment	RS. 295,000/-
Each Installment Amount (4 Years Payment Plan, 16 Installments Each due after every three months)	RS. 86,250/- (Each due after every three months)
Total Amount	RS. 1,675,000/-

### OVERSEAS PAKISTANI

Installment Details	4 Years Payment Plan (Quarterly Installments)
Plot Size	75 Sq. Yards (15' x 40')
Processing Fee (Non-refundable and not part of the total amount)	US\$ 35/-
Down Payment	US\$ 1,848/-
Each Installment Amount (4 Years Payment Plan, 16 Installments Each due after every three months)	US\$ 538/- (Each due after every three months)
Total Amount	US\$ 10,456/-

PAYMENT PLAN

## Build Your Own Dream Home

Ground Plus 2 Floors,  
4 Bed, covered area  
approx. 1700 Sq ft

**LOW  
COST  
SCHEME**

### ACCOMODATION

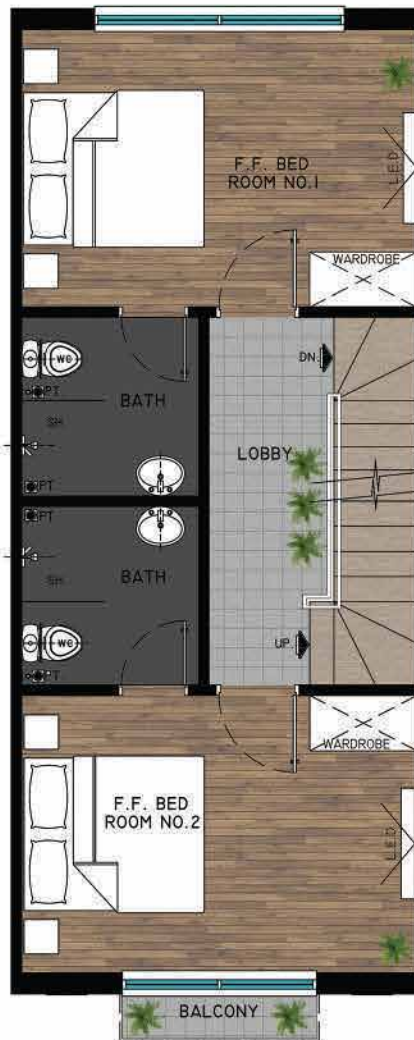
Ground Floor:  
Lounge, Kitchen, Dining,  
Powder Room, Stair Case,  
Store, Rear Passage

First Floor:  
2 Bedrooms with Attached Bath  
Balcony with one Room, Lobby

Second Floor:  
2 Bedrooms with Attached Bath  
Balcony with one Room, Lobby



GROUND FLOOR PLAN



FIRST FLOOR PLAN



SECOND FLOOR PLAN